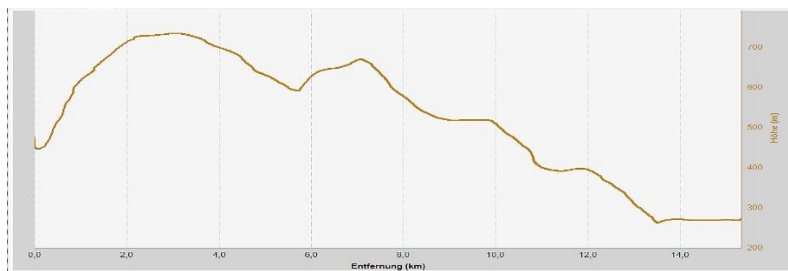


Pantasina - Villatalla - Tavole - Valloria - Passo della Valle - Lecchiore – Bellisimi



Elevation profile

Distance: 15.3 km

Time: 7 ¼ - 8 ½ hours

Ascent: 387 m

Data on the hike

The starting point of the hike is the church square in Pantasina.

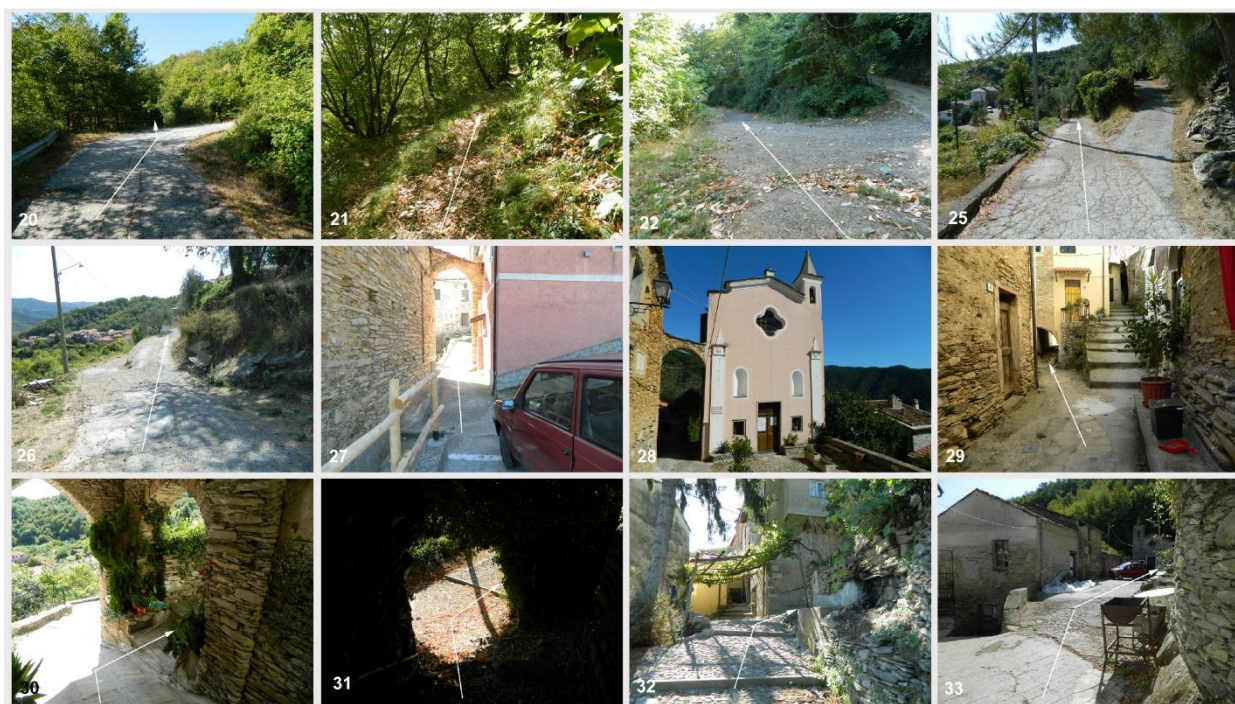
Take Via Santuario (arrow in Fig. 1) for about 150 metres past the Azienda Agricola Pino. After a few metres, turn right into a small side street (arrow in Fig. 2). After about 30 metres, the small road turns into a mule track. Follow the path, which climbs steeply in places, keep right at a junction (Fig. 4) and continue climbing until you reach the provincial road again (Fig. 5). Cross the provincial road. After a few metres uphill, the mule track branches off to the left. Follow the path uphill to the ridge. Keep right at the fork (Fig. 6). It will take you about 15 to 25 minutes to reach this point. Now follow the path uphill. After another 10 to 20 minutes through the forest, you will reach an open, stony slope from where you have a beautiful view of Pantasina. Cross the open area and follow the path through the forest further uphill. After another 10 - 15 minutes you will come to a fork. Take the path straight ahead (Fig. 7). You will reach a saddle from where you have a marvellous view of Tavole and Villatalla in Val Prino. Monte Faudo rises up in the background.



After approx. 5 - 10 minutes, you will come to a gravel road on which you turn left and uphill (fig. 9, 10). After a few hundred metres there is a chapel (San Bernardo) on the right (fig. 11). Now follow the gravel road to the left (fig. 12). After approx. 45 minutes to 1 ½ hours you will reach Villatalla. Shortly before Villatalla, you will pass the small church of Santa Marta (Fig. 14). At a fork in the path, keep right (fig. 15) and cross the bridge. At the crossroads (fig. 17), turn right and follow the road steeply uphill. After a few hundred metres, continue straight ahead (fig. 18) and you will soon reach the Madonna della Neve church (fig. 19). Pass the church. A few metres uphill, a path branches off to the left (fig. 20).



Follow this path, which leads largely downhill through the forest to Tavole. At one point (fig. 21), make sure that you continue straight ahead, cross several mountain streams and finally reach a road. Follow the road downhill (fig. 22). After a short distance you come to a road, turn right and follow the road that leads to Tavole. At the first fork in the road, keep left (fig. 25), at the second, keep right (fig. 26). Pass the church of San Benedetto (fig. 27) and (fig. 28) and turn right. Follow the narrow road first uphill (fig. 29) and then downhill, turn right into a narrow path bordered by walls (fig. 30). At the end of the path, turn right and climb up the cobbled path (fig. 31). After a few metres, turn right (fig. 32) and follow the narrow road past the small church (fig. 33).



Follow the road and turn right at the fork (fig. 34). After a few hundred metres you will reach an open square with the Madonna del Piano church, pass the square and keep left (fig. 35). Follow the path downhill (figs. 36, 37, 38, 39, 40, 41, 42, 43). You come to a road (fig. 44), follow this road to the right, turn left after a few metres (fig. 45) past the church of San Giuseppe and pass the Agriturismo San Giuseppe. Descend the steep path and reach the village square of Valloria.



Pass the church of Valloria and go downhill. You will see the Valloria washing station on your right. You will come to a road (fig. 46), turn right and follow this road, which is more or less flat to slightly uphill to Passo del la Valle. Keep right at the next two forks in the road and turn left at the next one (fig. 47). After a few metres you reach the pass and turn right (fig. 48), follow the road downhill, turn right after a short distance (fig. 49) and continue downhill, sometimes steeply (figs.

50, 51, 52). You will finally reach the church of Acquasanta (fig. 53 54). Go past the church on the left and follow the path that leads in steps to the road to Lecchione (fig. 55). Follow the road and turn left in the village (fig. 56). The road initially goes slightly downhill and leads to the church of Lecchione. At the side of the church, take a sharp right turn uphill (fig. 57).



Follow the above-mentioned markings (fig. 58, 59 , 60, 61, 62, 63, 64, 65) uphill through these narrow lanes. Leave Lecchione and follow the markings through olive groves to Bellissimi (figs.66, 67, 68, 69). The path ends on the forecourt of the church.

